

INSTALLATION GUIDE FOR SIMAPRO CRAFT DEMO



www.centrodeformacionsostenible.com

Reproduction of this document, in whole or in part, as well as its incorporation into a computer system and transmission in any form or by any means, is prohibited without prior authorization from the Sustainable Training Center. All rights reserved. V.0.25

INSTALLATION GUIDE



Follow these steps



To install the demo license of SimaPro



(Valid only for Windows operating system)



<https://www.youtube.com/watch?v=mP8PYB7BTdY&t=1s>

STEP 1

- ▶ Go to this link:
<https://simapro.com/try/>
- ▶ Fill in the form and click the **SUBMIT** button.
 - If the form does not appear, try changing your browser.

Request your free SimaPro Craft demo

I would like to try:

SimaPro Craft ✓

I am interested in using SimaPro Craft for:*

Please select ✓

First name* Last name*

Company name
or educational institution

Email*

Country*

Please select ✓

☐ I agree to allow PRé Sustainability B.V. to store and process my personal data.*

Please complete this required field.

For information on how we process your personal data, please refer to our Privacy Statement.

SUBMIT

Select this checkbox

STEP 2

► You will see this message:

► Choose the option
“**Download Demo**”.

► It will take you to this page:

<https://www.youtube.com/watch?v=nz4YMmf8suA>

- You may be asked to enter your details again. If so, fill them in once more and click “**Continue**”.

Thank you!

Thank you for your interest in SimaPro! You can download the installation file for the SimaPro Craft demo below. If you experience any issues with downloading or installing the demo, please reach out to support@simapro.com. We are happy to help!

DOWNLOAD DEMO

HELP CENTER

Correo electrónico

* Required fields

Nombre

Apellido

Empresa

☐

No soy un robot



reCAPTCHA
Privacidad • Términos

☐ Recordarme


Continuar

STEP 3

- ▶ Click **“Download”**.
- ▶ Wait for the download to finish. Depending on your internet connection, it may take about 3 minutes.
- ▶ Go to the **“Downloads”** folder o or wherever you chose to save the file) and double-click **“SetupSimaProDemo1020”**.



- If the window **“Do you want to allow this app to make changes to your device?”** appears, select **“Yes”**.



SetupSimaProDemo1020.exe

837 MB

Última actualización
06/10/2025 10:58AM

Creador: PRé Support

[Descargar](#)

Detalles

Nombre

SetupSimaProDemo1020.exe

Tamaño

837.43 MB

Última actualización

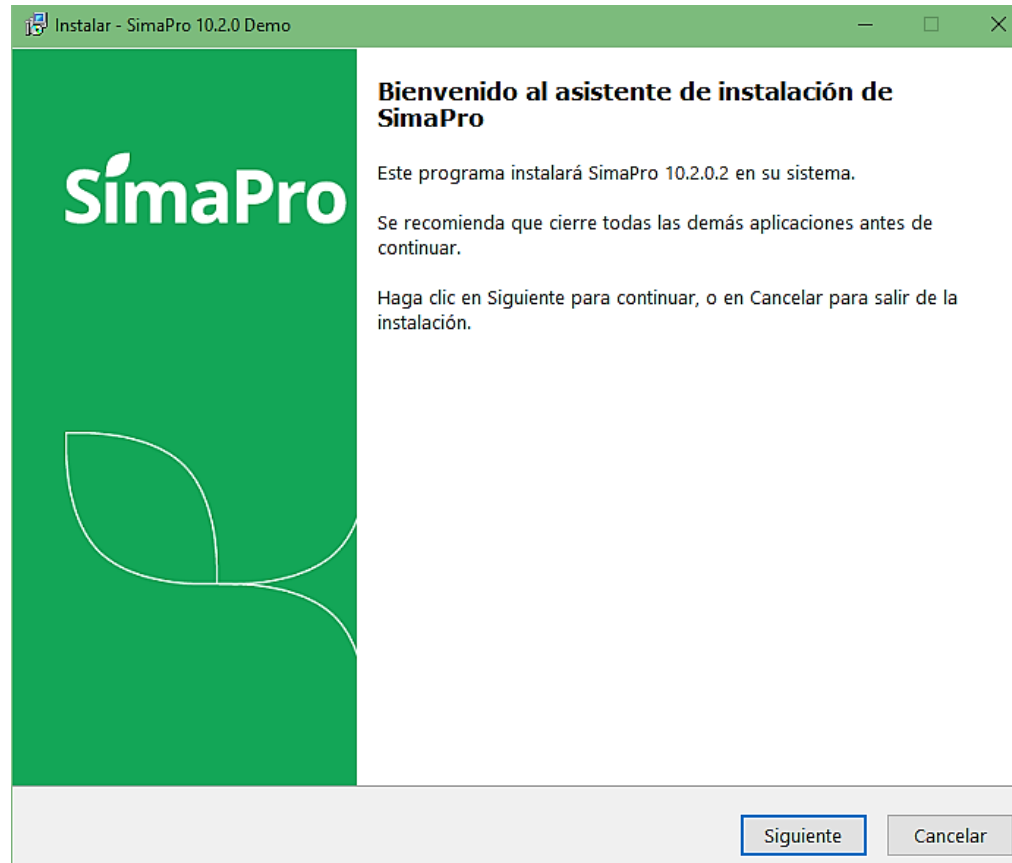
06/10/2025 10:58AM



[Descargar](#)

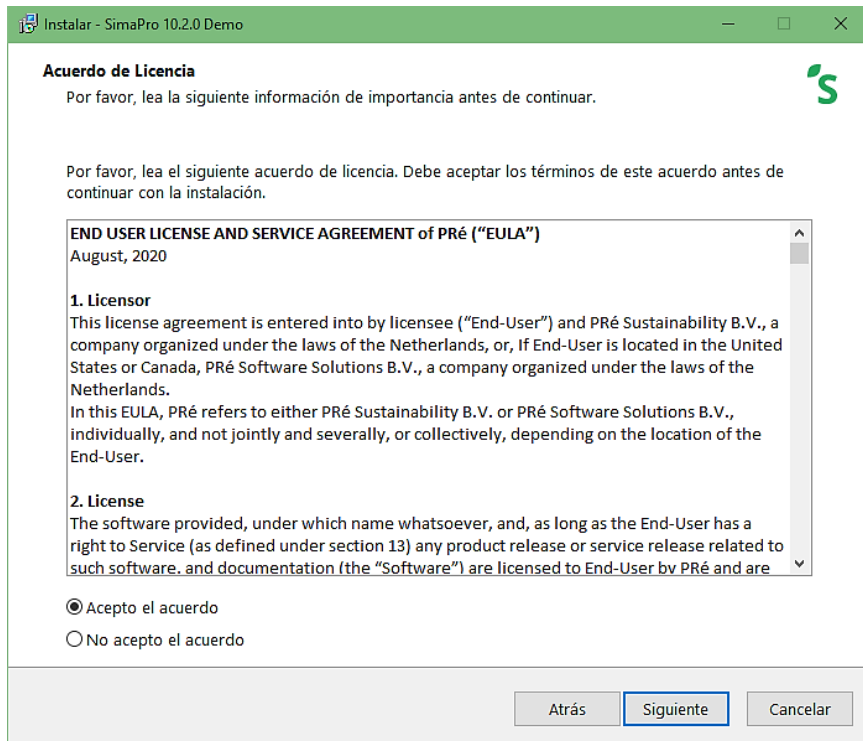
STEP 4

- ▶ When this window appears, click on “Next” to begin installing the program (the number may vary depending on the latest version available).
 - We recommend having a good internet connection and allowing about 10 minutes.

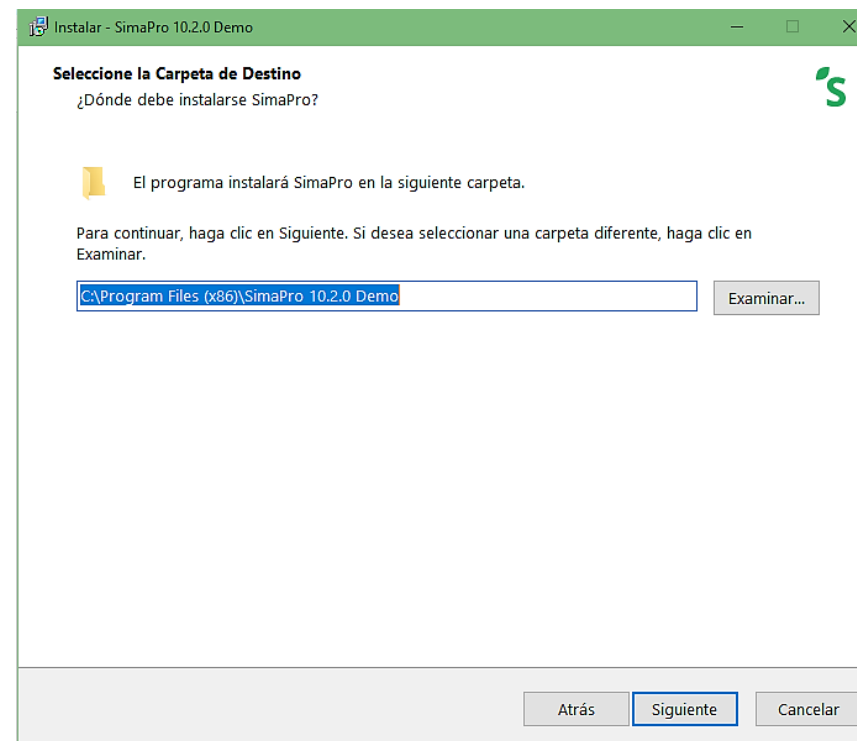


STEP 5

- Accept the license agreement and click “**Next.**”

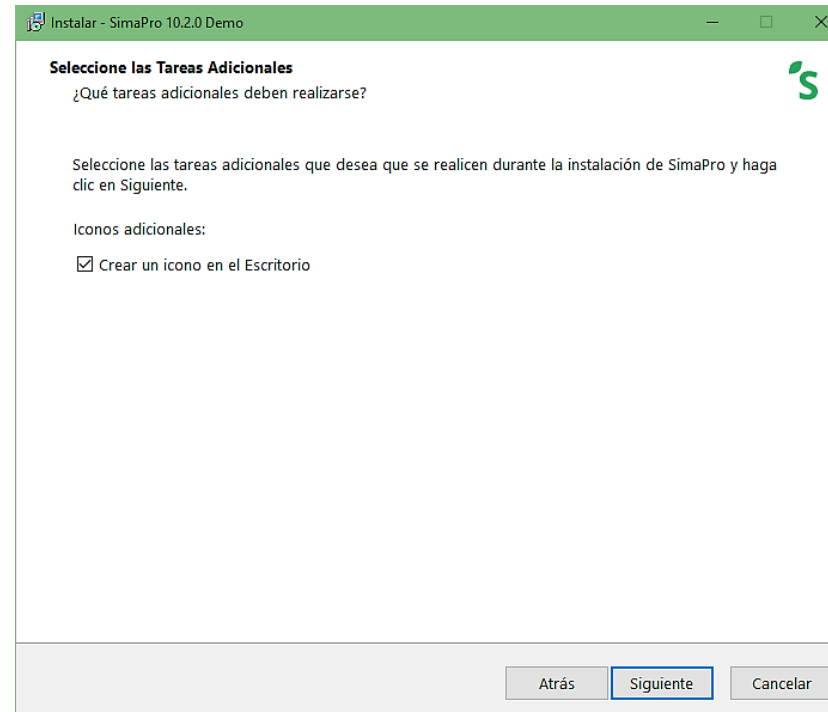
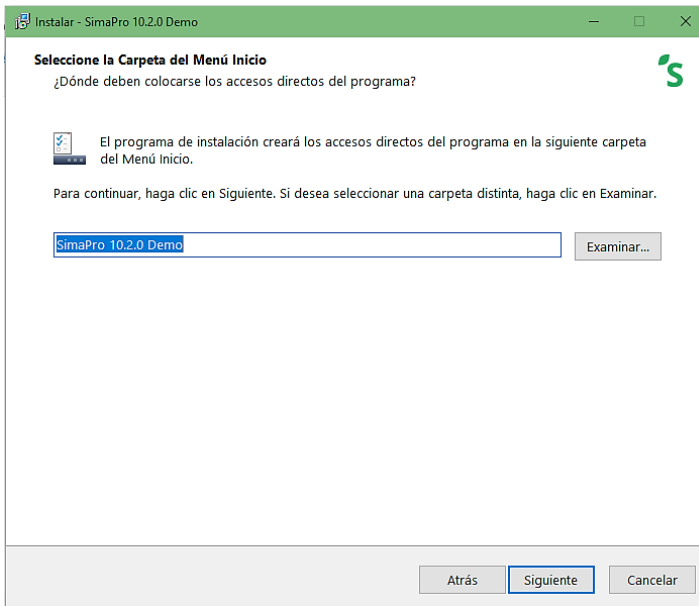


- Choose the folder where you want to save it (you can leave the default option) and click “**Next.**”



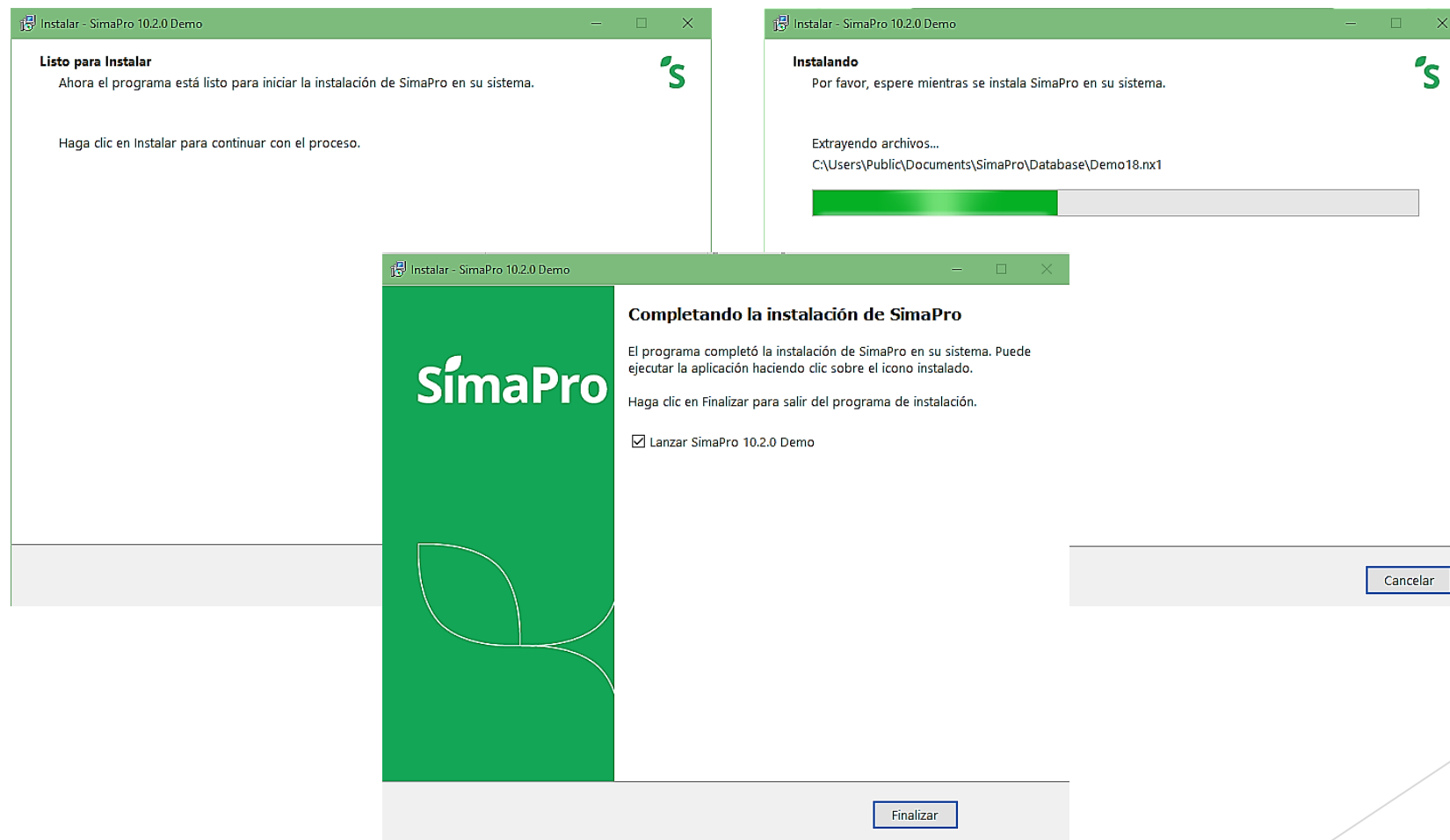
STEP 6

- Several windows will appear as shown below; click “Next.” A software database update window may appear—if so, click “Next.”



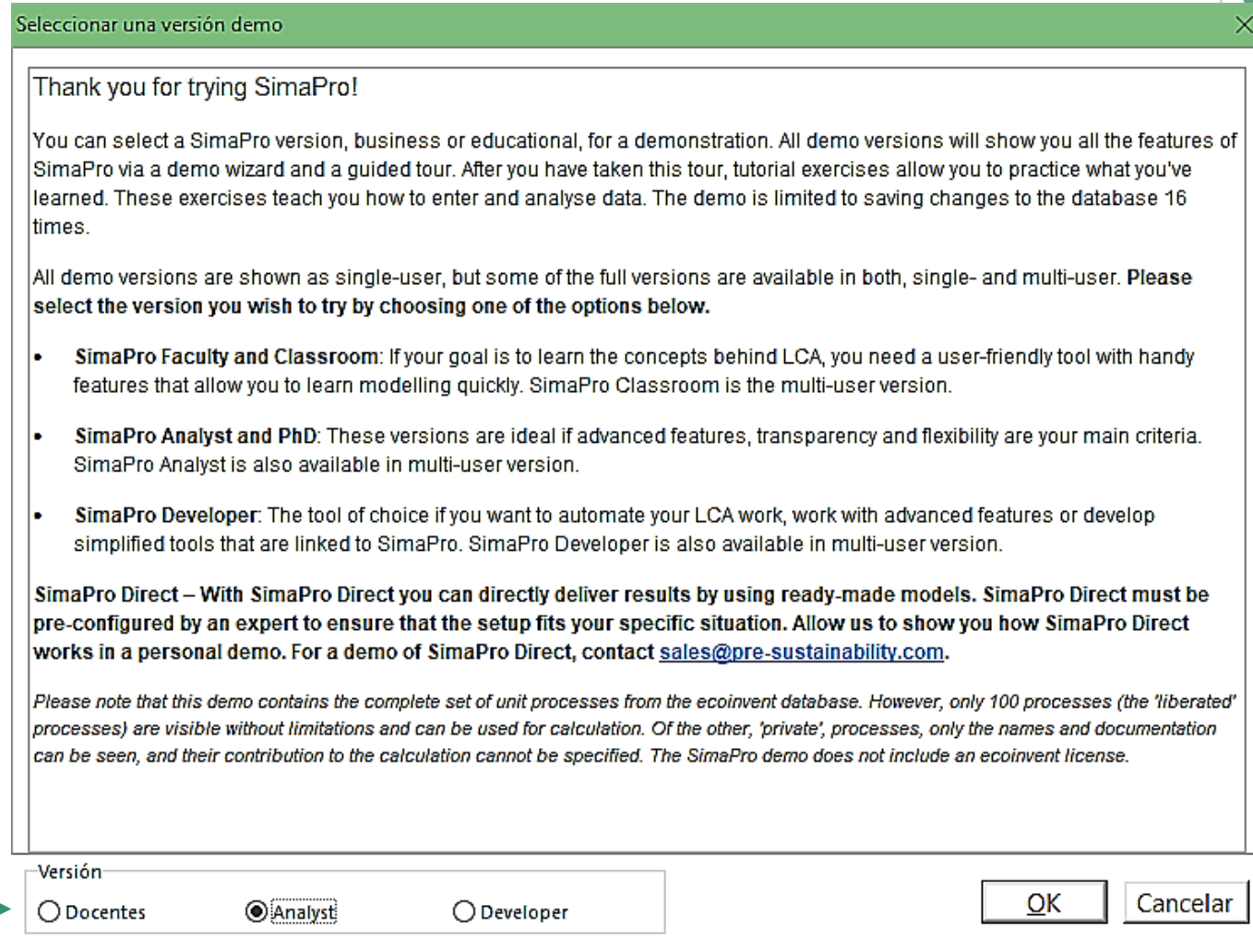
STEP 7

- Finally, click on **“Install.”** Wait a few minutes while the program installs on your computer.



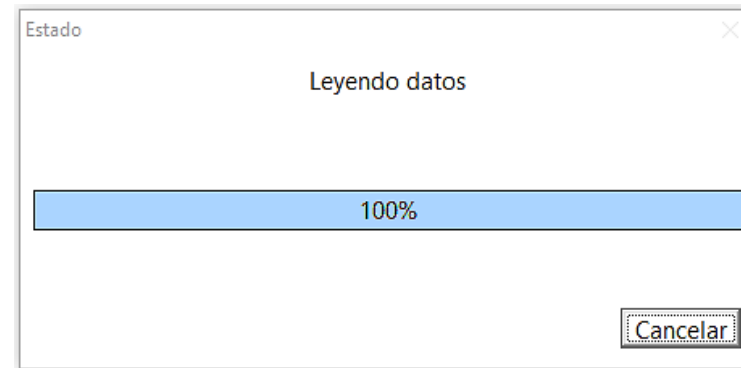
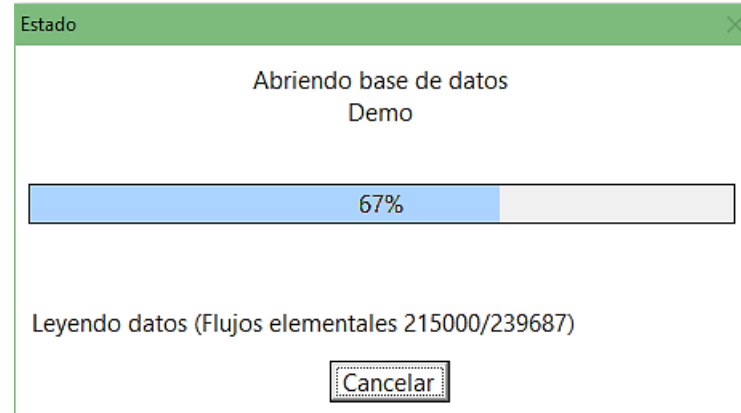
STEP 8

- Once installed, run the program, select the “Analyst” version, and click “OK.”

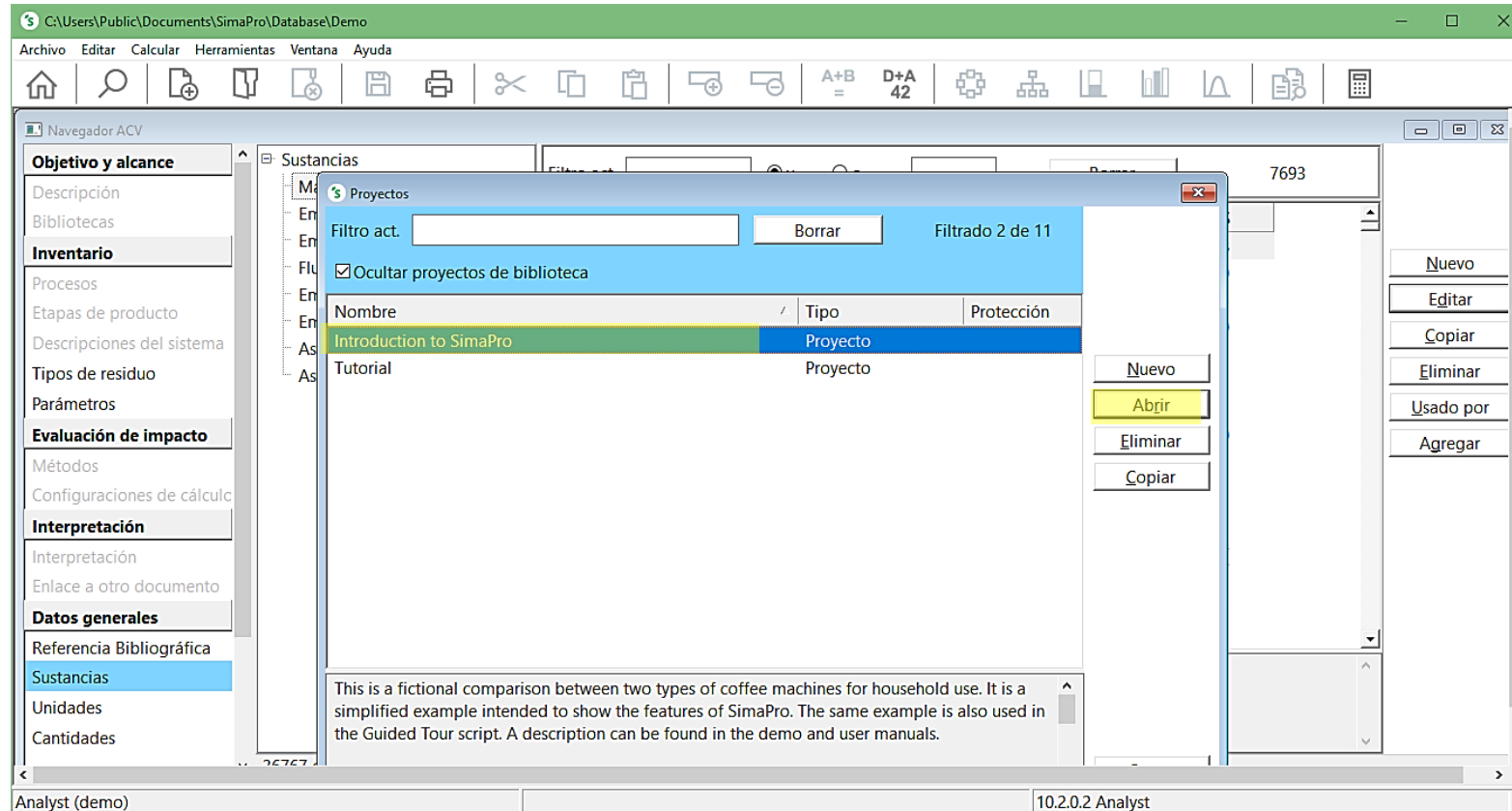


STEP 9

- ▶ If you have previously installed SimaPro on your computer, you may see a window asking you to choose the database you want to work with.
- ▶ Select “**Demo**” (or whichever you prefer) and click “**Open.**”



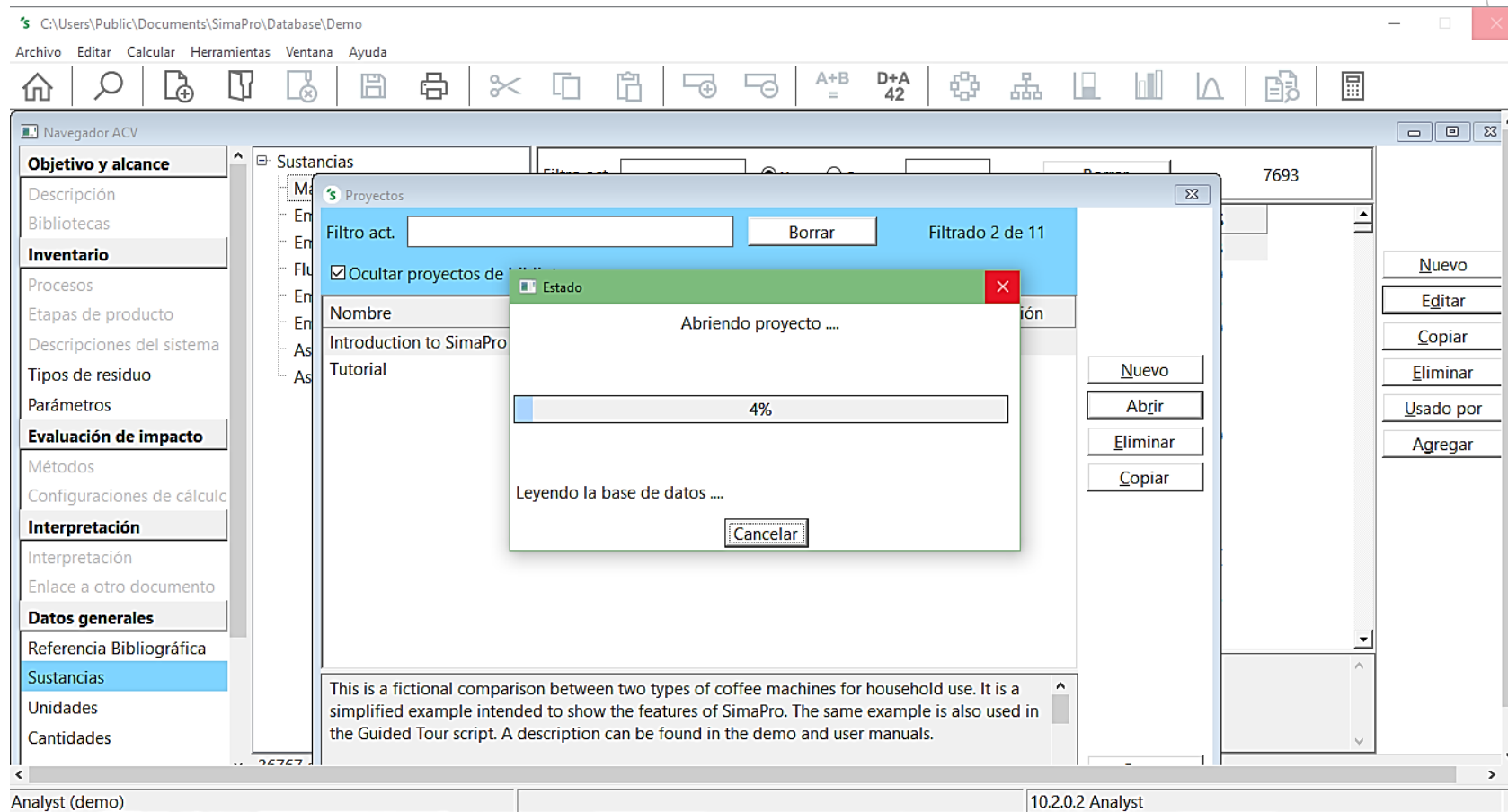
STEP 10



- Go to *File*, select the project **“Introduction to SimaPro”** and then click the **“Open”** button.

STEP 10

Please note: this demo version is free but has limitations compared to the temporary license we provide in our [SimaPro y Análisis Ciclo de Vida \(ACV\)](#) course. For example, it only allows you to save a limited number of times, and exporting data to Excel is not possible.



If you are interested in learning how to carry out a study on:

- Life Cycle Assessmentt (LCA)
- Water footprint
- Carbon footprint
- Environmental footprint
- Circular indicators or Environmental Product Declaration (EPD)



CENTRO DE
FORMACIÓN
SOSTENIBLE

Write to us at: contacto@centrodeformacionsostenible.com

Take a look at our catalog of online courses
at: <https://centrodeformacionsostenible.com/cursos/>